



Webapplication for Supplier Tooling inventory

Documentation,
englisch version

Ulrich Stollbert, 8/29/2008 5:00 PM

Table of content

Table of content	2
1 General information	3
2 Login	3
3 Overview application	5
3.1 Header data and logout.....	5
3.2 Navigation	6
3.3 Field description of overview tools.....	7
3.4 Paging function for more than 25 tools.....	9
4 Proposal how to perform the Inventory with the Internet application	10
5 Additional tools not provided	11
6 Delete tools	12
7 No tools are proposed after login	13
8 Error messages	13
9 Confirmation of the stock taking	14
10 contact	14

Historic:

Date	Changes	responsible
28.08.2008	Document created	Ulrich Stollbert

1 General information

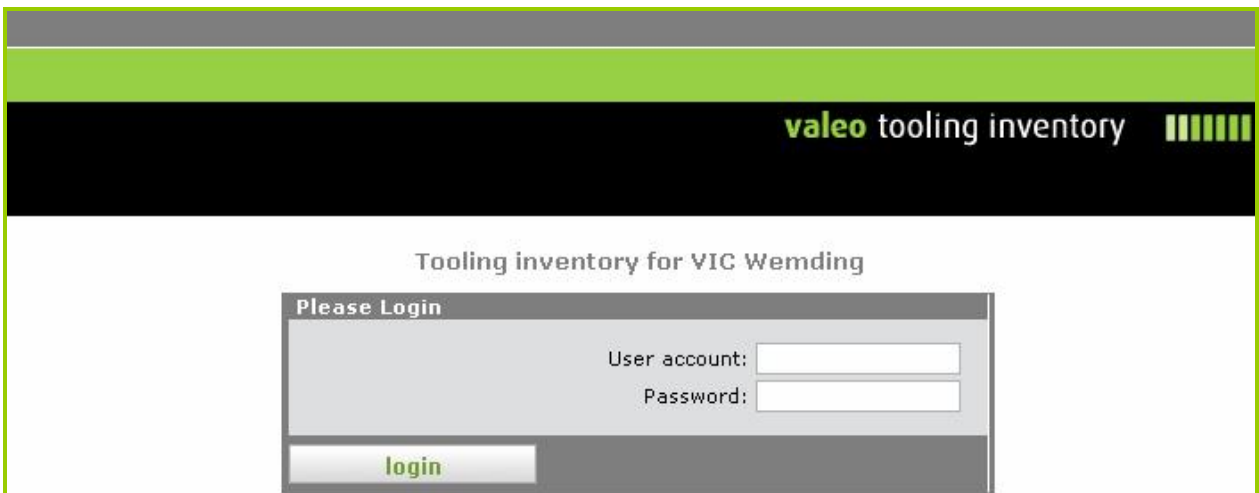
For the yearly stock taking of supplier tools, we provide you the information in an Internet application.

For each tool you have to confirm / deny the physical existence. We will also take this opportunity to update our inventory numbers. Tools not listed in this overview have to be added to the list. Suppliers with empty pages, can also add tools, but in any case you have to give us your confirmation by pressing the button send.

2 Login

To make the first login following steps are necessary:

1. Start Internet with your Browser
2. Choose the Internetaddress <http://www.valeo-wemding-ti.com>
3. You will get following Start page



The screenshot shows the login interface for the 'valeo tooling inventory' application. At the top, there is a black header with the text 'valeo tooling inventory' and a green progress indicator. Below this is a white section titled 'Tooling inventory for VIC Wemding'. In the center, there is a grey box titled 'Please Login' containing two input fields: 'User account:' and 'Password:'. A green 'login' button is positioned at the bottom of the grey box.

4. The user account is your supplier number from Valeo Schalter & Sensoren GmbH, Wemding, the supplier number starts with 8 and has 6 digits.
5. The initial password will be send to Valeo known Emailaddress.

6. After login you will get following screen where you have to change your password

Supplier Profile

Error: Please change your password and specify the contact person!

To increase security of the application each user needs to change the password and specify one contact person after first log in at Valeo Tooling Inventory. The Tool overview and administration will be available after modification of your password.

Change Supplier Profile	Change Supplier Account	Contact and comment
Supplier Number: 80005 Name: W. Bau: Street: Siemens: Street No.: 2 Postal Code: 7856 City: Weh Country: Deutschland	Login: 800059 * New Password: <input style="width: 80px;" type="password" value="*****"/> * Confirm Password: <input style="width: 80px;" type="password" value="*****"/>	* First Name: <input style="width: 100%;" type="text" value="Walter"/> * Last Name: <input style="width: 100%;" type="text" value="Senner"/> * E-Mail: <input style="width: 100%;" type="text" value="walter.senner@sub.com"/> Phone: <input style="width: 100%;" type="text" value="+49 7145/206-55"/> Comment: <div style="border: 1px solid #ccc; height: 40px; width: 100%;"></div>
		<input type="button" value="save"/>

7. Please choose a new password with more than 6 digits. Additionally you have to fill in the contact data for the person in charge. Mandatory fields are first name, last name and the Emailaddress. Than you have to click the Button „Save“.
8. To view and edit the tools you have to click on „tools overview“ or „here“. You will be forwarded to the overview screen.

Supplier Profile

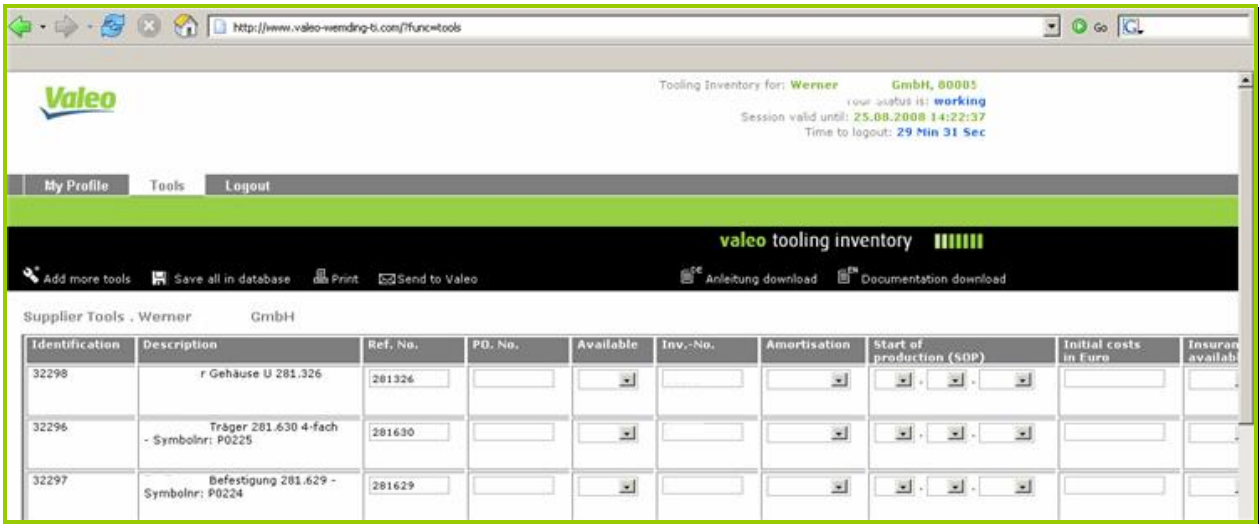
Profile successful changed!

You're **tools overview** is now enabled. Click [here](#) to view and administrate your tools.

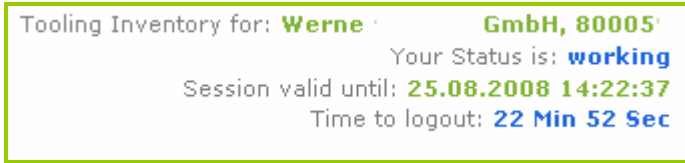
9. To leave the application you have to click on logout.

3 Overview application

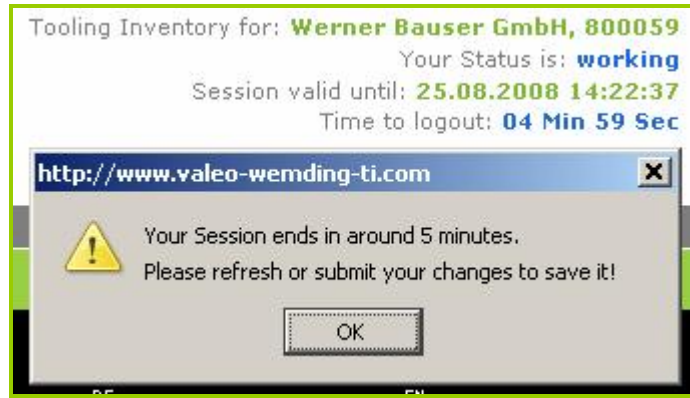
After the first login, you will get a list with the overview of the tools.



3.1 Header data and logout

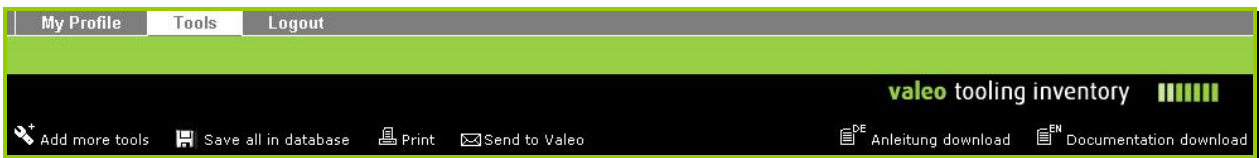


Field	description
Tooling Inventory for	Here you get the information about the supplier name and the supplier number.
Your Status is	Different states are : Login : You have made the first login, but not made any changes on the tools yet. Working : You have made the first changes of tools and have saved this changes. You can continue working on the datas. Finished : You have finished the stock taking by clicking the button „send to valeo“. The adaption of the data with the application is no more possible. <i>In urgent cases you can contact Valeo to reopen the account.</i>
Session valid until	For security reason, we logout automatically after 30 minutes. You have to save your datas, before your session will be automatically logged out, that you do not loose any datas. After click on the button „save in database“, the logout time will be start new.
Time to logout	The logout time is counted automatically backwards. 5 minutes before logout, you will get an additional warning.



Please click on ok and press the button „Save all in database“. Afterwards the logout time will be set new.

3.2 Navigation



The different function of the navigation are:

Field	description
My Profile	Here you can display your address data. Additionally you can change your password, also you can edit the contact data of the person in charge and add an general comment.
Tools	Here you can display and edit your tools
Logout	Logout from the application
Add more tools	With this function you will be forwarded to an input screen to add more tools.
Save all in data-base	Here you can save the data. This is possible at any time, even if error messages are displayed.
Print	Here you can print the tool data at any time
Send to Valeo	If you have finished your stock taking without any error messages, you can send the data to Valeo. After this action, you cannot change the data again. Please send in parallel the printout with company stamp, date and signature as attachment via Email and post. (more details you will find on the information letter)
Anleitung downlo-ad	Documentation as pdf in german
Documentation download	Documentation as pdf in englisch

3.3 Field description of overview tools

Here you get an description of the fields of the table. The amount of fields, you will see without to scroll is depending of your display resolution.

List Part 1

Identification	Description	Ref. No.	PO. No.	Available	Inv.-No.	Amortisation	Start of production (SOP)	Initial costs in Euro
3935	Gehäuse U 281.326	281326		<input type="checkbox"/>		<input type="checkbox"/>	<input type="checkbox"/> . <input type="checkbox"/> . <input type="checkbox"/>	
3876	Träger 281.630 4-fach - Symbolnr: P0225	281630		<input type="checkbox"/>		<input type="checkbox"/>	<input type="checkbox"/> . <input type="checkbox"/> . <input type="checkbox"/>	

List Part 2

Initial costs in Euro	Insurance available	Total pieces planned	Total pieces made yet	Also other Valeo Customer	Also other non Valeo Customer	Contract attachment	Comment
<input type="text"/>	<input type="checkbox"/>	<input type="text"/>	<input type="text"/>	<input type="checkbox"/>	<input type="checkbox"/>	<input type="text"/> <input type="button" value="Durchsuche"/>	
<input type="text"/>	<input type="checkbox"/>	<input type="text"/>	<input type="text"/>	<input type="checkbox"/>	<input type="checkbox"/>	<input type="text"/> <input type="button" value="Durchsuche"/>	

description of the fields

Field name	description
Identification	This is the inventory number we have today saved in the asset management. This should be the inventory number, which is on your tool. If not it can be also a part number of Valeo, which is produced on the tool or others. -> the target of this inventory is also to validate the inventory number. With the information we provide to you, you should identify the tool and write the inventory number of the tool in the field Inv.No.
Description	This is the description of the tool, the description can also include one of the part number of the product, which are produced on the tool.
Ref. No.	Reference number, which is produced on the tool. If no number is proposed or wrong, please edit the number. The Format of the reference number are 6 numbers, without dot and comma, eg. 256878.
PO No.	PO number the tool was ordered from Valeo. This information will be only provided if available. If nothing proposed you can add the PO number, if you remember.
Available	This is a mandatory information. Yes – the tool is available at your plant, also tools in amortization or amortized No – the tool is not available at your plant, additionally you have to fill in

	the comment, why it is not or no more available
Inv. No.	This is an mandatory information for tools, which are available at your plant. Please fill in the inventory number, which is on the tool. If you do not have an inventory number from Valeo, please write no number in this field.
Amortisation	Mandatory information for available tools. Yes – the tool was amortized or is in amortization No – the tool was not amortized and is in the ownership of Valeo
Start of production (SOP)	Date for start of production
Initial costs in Euro	Initial costs for the tool
Insurance available	Is there an insurance available fort the tool ?
Total Pieces planned	Number of pieces, which are planned to produce in total on the tool.
Total Pieces made yet	Number of pieces, which are produced yet on the tool.
Also other Valeo customer	Yes – You produce also parts for other Valeo plants on this tool No – You do not produce parts for other Valeo plants on this tool
Also other non Valeo customer	Yes – You produce also parts for other customer on this tool No – You produce only parts for Valeo on this tool
Contract attachment	With this function you can attache the tool contract as attachement in pdf or doc Format. With the click on select, you can search and select a file from your directory. With a click on the symbol disk, you can attach this document. After the upload you can display or delete this document. The max filesize is 1 MB.
Comment	Mandatory information, if the tool is not available. You have to fill in an comment, why the tool is not available. You can also fill in all kind of comments, if the tool is available.

3.4 Paging function for more than 25 tools



If your account has more than 25 tools, you get automatically an paging function proposed see on the screen shot). You can click on the button „show next 25 tools“ or „show last 25 tools“ you can go to the next page or backwards. In the middle of this function you can see, where you are. You have to maintain save the tools page by page. When you have maintained and saved all the pages / tools, you can send the data to Valeo.

If you get following error message, some information are still missing.

Error: Not all tools have been completed correctly!
Please check this or other sites and submit again if all mandatory fields have been completed.

Please check each page, by clicking “save all in database”.

4 Proposal how to perform the Inventory with the Internet application

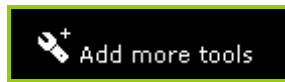
1. Login on the application with the Internet address <http://www.valeo-wemding-ti.com>
2. After the first login, you have to change your password and edit your contact data for the person in charge. After successfully save, you can move to the tool overview.
3. Now you can print a list, if you click on the Button „Print“
4. Please check the availability of the tool and prepare the information to type in the data in the application.
5. Validate each tool, if it is available or not, depending on the input you have to fill in additional information. If you have tools not proposed, please add them.
6. Send the information to Valeo, even you have no tools
7. Print the result of the inventory and send the printout with date, signature and company stamp as attachment via Email to the address : vic-wemding-ti@valeo.com and in parallel via post to Valeo Schalter & Sensoren GmbH to Ms Rita Fröhlich.

Remark :

You can save the data at any time, before sending. You will get proposed all the information in red, which are mandatory to fill in. Also error messages.

5 Additional tools not provided

If you want to add tools, which are not yet displayed, you can add them by pressing the button “add more Tools”. Please save the datas before you click on this button, to loose not your changes on the screen.



You will get following window :

A screenshot of a web application window titled "Create New Supplier Tool - Werner Bauser GmbH | back to overview". The window contains a form titled "Specifications of Tool". The form has several fields: "Identification:" with a "New" link; "Description:" with a large text area; "Reference No.:" with a text field; "PD number:" with a text field; "Available:" with a dropdown menu; "Inventory No.:" with a text field; "Amortisation:" with a dropdown menu; "Start of production (SDP):" with three dropdown menus; "Initial costs in Euro:" with a text field; "Insurance available:" with a dropdown menu; "Total pieces planned:" with a text field; "Total pieces made yet:" with a text field; "Also other Valeo customer:" with a dropdown menu; "Also other non Valeo customer:" with a dropdown menu; "Contract attachment:" with a text field and a "Durchsuchen" button; and "Comment:" with a large text area. At the bottom right of the form is a "Create Tool" button.

Please fill in the necessary information and click on the button “create tool”. It is also possible to upload an contract attachement during this creation. After the confirmation the data are saved.

Your tool has successfully been created.

Specifications of Tool

Identification: New

Description: Dies ist ein zus. Werkzeug, welches bei Ihnen nicht erfüllt ist.

Reference No.: 255333

PD number: 4500010

Available: Yes

Inventory No.: 256-4525

Amortisation: Yes

Start of production (SDP): 15 . 08 . 2000

Initial costs in Euro: 150000

Insurance available: Yes

Total pieces planned: 1000000

Total pieces made yet: 500000

Also other Valeo customer: No

Also other non Valeo customer: Yes

Contract attachment: Durchsuchen

(only PDF/DOC files with max. 1MB file size)

Comment:

[Create more tools](#)

[Back to tools overview](#)

After this action, you can go back to the tool overview, when you click the button „Back to tools overview“. If you want to create an new tool, please click on the button “Create more tools“

In the overview it is also possible to change the data again.

6 Delete tools

A delete function is not available. Tools, which are proposed from Valeo, has to be defined as available yes or no. Tools you have added with available yes, you can change back to available no in the screen tool overview.

7 No tools are proposed after login

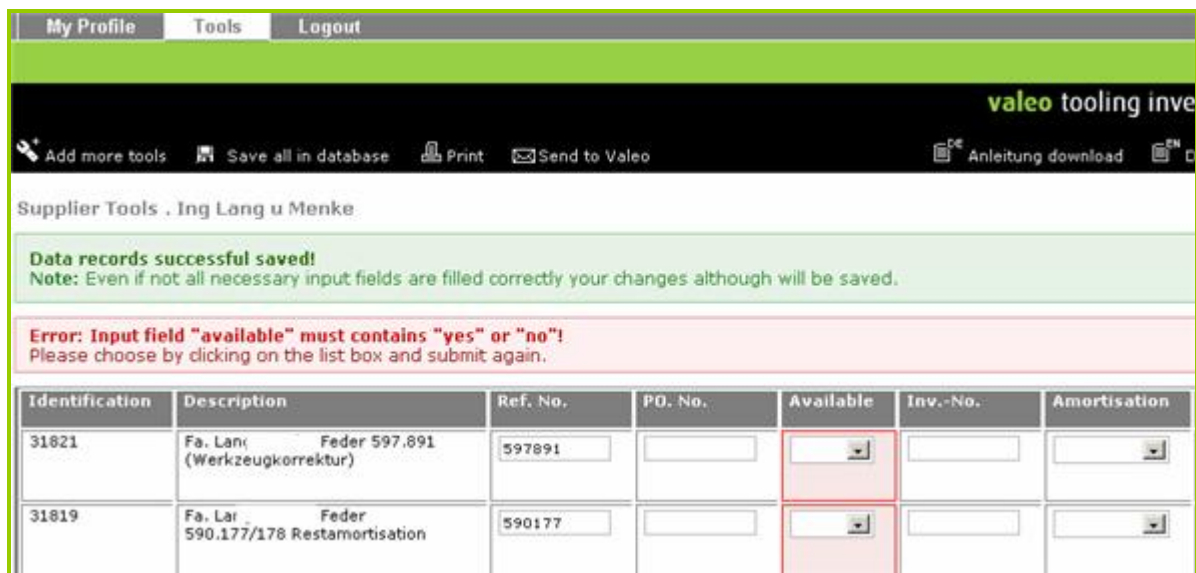
If you login and get an empty screen, you can add tools by clicking on the button „Add more Tools“.



If you have really no tools, you have to fill in the contact data and press the button “send to Valeo” as confirmation. Please send in parallel the printout with date, signature and company stamp to Valeo via Email and post.

8 Error messages

If you click on the button “save all in database”, you will get displayed the mandatory information to be filled out with an error message in the header.



You can save, even you get error messages (Data records successful saved), but it is not possible to send with errors. Additionally to the error messages, the fields are marked in red you have to fill out.

9 Confirmation of the stock taking

If you do not get anymore error messages, after you have saved, you will get following message :



The screenshot shows a web interface for 'valeo tooling inventory'. At the top, there are navigation tabs: 'My Profile', 'Tools', and 'Logout'. Below the tabs, there are several action buttons: 'Add more tools', 'Save all in database', 'Print', 'Send to Valeo', 'Anleitung download', and a help icon. The main content area is titled 'Supplier Tools . Ing Lang u Menke' and contains a green message box that reads: 'Finish your tool administration! Now that all input fields filled successful, it's possible to send your changes to VALEO. In connection with your submit the administration of your tools will be closed.' Below the message is a table with the following data:

Identification	Description	Ref. No.	PD. No.	Available	Inv.-No.	Amortisation
31821	Fa. Lang&Menke Feder 597.891 (Werkzeugkorrektur)	597891		Yes	2532-251	
31819	Fa. Lang&Menke Feder 590.177/178 Restamortisation	590177		No		

Now you can press the button „send to Valeo“ to finish the stock taking.

10 contact

Purchasing department :

Walburga Dunzinger

Phone: Tel.: + 49 (0) 9092-603-298

Email.: walburga.dunzinger@valeo.com

Asset accounting department :

Rita Fröhlich

Phone: + 49 (0) 9092-603-619

Email. : rita.froehlich@valeo.com

In case of technical problem :

Ulrich Stollbert

Phone: + 49 (0) 7142-73-2205

Email.: ulrich.stollbert@valeo.com