



Valeo WebEDI OBP 3.3 Training document

Download of messages

WebEDI: Thomas Gries
09/04/2010 10:30 AM

Table of content

Table of content	2
1 Available Downloads	3
2 Download of messages	3
2.1 Example csv-download	3
2.2 Upload csv-file in Microsoft Excel	5

Historic:

Date	Changes	responsible
11.05.2007	Document created	Thomas Gries

1 Available Downloads

For incoming messages to WebEDI a Download is available in XML Format. To improve some processes also a CSV Download was created. In the Matrix you see the Download possibilities for each process.

Process	Download XML	Download CSV
Delivery Instructions	X	X
Call Off	X	
Credit notes		X
Stock Movements		X

2 Download of messages

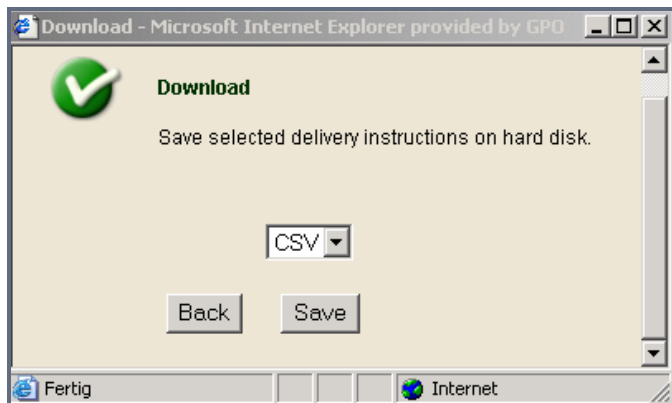
2.1 Example csv-download

Example for delivery schedules:

181-048-99-99	LAGERBUCHSE	Oct 6, 2004 9:45 AM
181-048-99-99	LAGERBUCHSE	Sep 29, 2004 9:22 AM
181-049-99-99	LAGERBUCHSE	Oct 6, 2004 9:45 AM
181-049-99-99	LAGERBUCHSE	Sep 29, 2004 9:22 AM
181-467-99-99	HALTER	Oct 6, 2004 8:56 AM
181-467-99-99	HALTER	Sep 29, 2004 9:20 AM
181-468-99-99	LAGERBUCHSE	Oct 6, 2004 9:42 AM
181-468-99-99	LAGERBUCHSE	Sep 29, 2004 9:21 AM
181-470-99-99	LAGERBUCHSE	Sep 29, 2004 9:20 AM
181-471-99-99	LAGERBUCHSE	Sep 29, 2004 9:20 AM
182-539-99-99	LAGERBUCHSE	Oct 6, 2004 9:44 AM
182-539-99-99	LAGERBUCHSE	Sep 29, 2004 9:23 AM
183-268-99-99	LAGERBUCHSE	Oct 6, 2004 9:43 AM

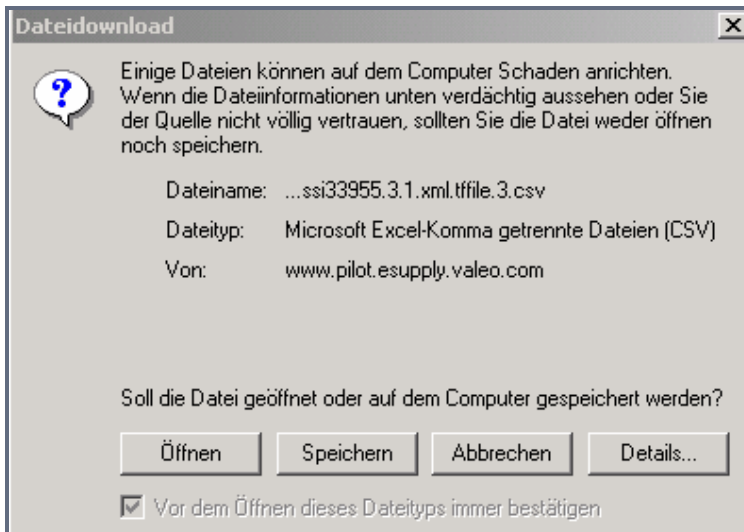
Back Download Print

Choose your delivery schedules for the download and press button "Download"! The following pop up will open for selecting the format:



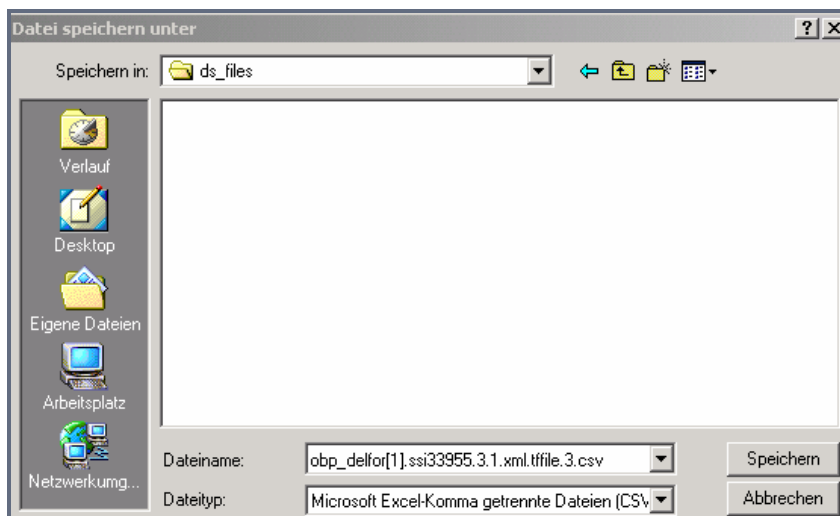
Please select your download format XML or CSV, in the selection box. To continue Button "Save"!

An additional message comes:



Choose the following option:

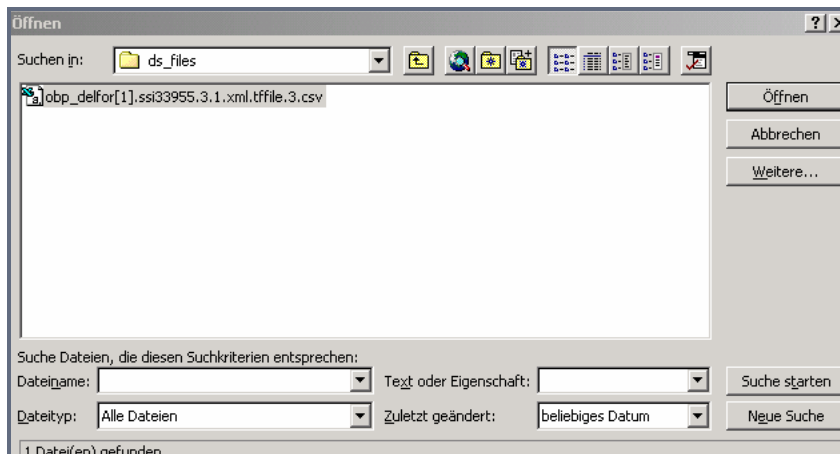
- Save file locally (Speichern)



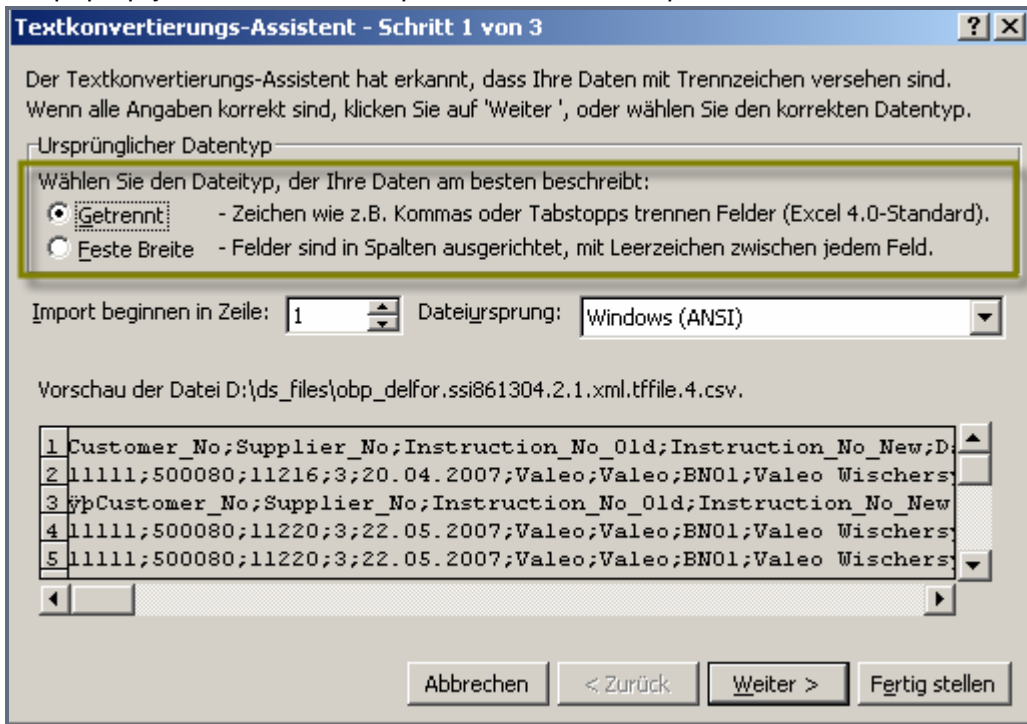
Select a file name and a place to save the data on your local data base!

2.2 Upload csv-file in Microsoft Excel

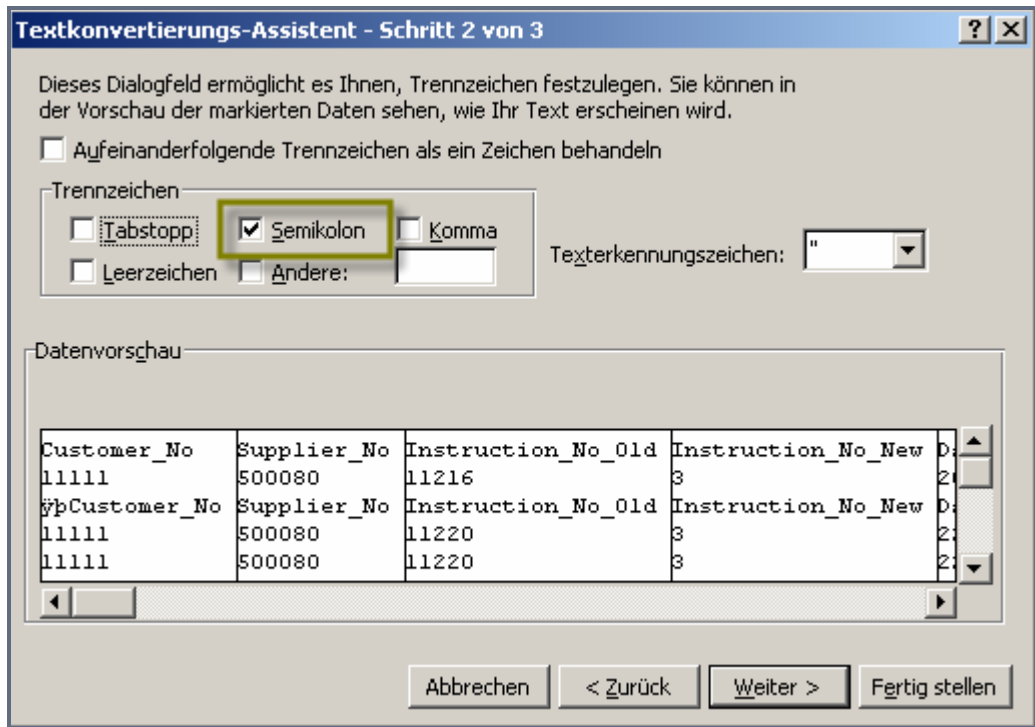
For opening the file, please start Microsoft Excel and select from the menu the function “Open file”. Please change the type of file in the selection to “all datas”. Select the file you have saved before and click on the button “open”.



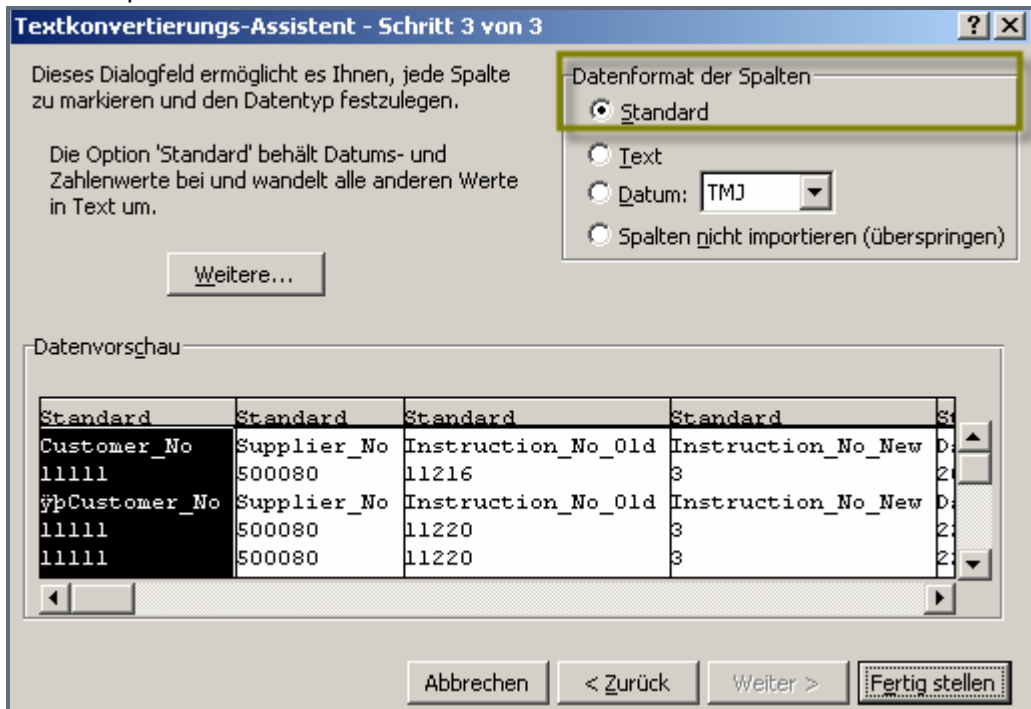
On the next pop up you have to define parameters for the upload to Excel:



Please choose the option “Getrennt” (separated) and press the button “Weiter” (Continue) You will get a next pop up to select the options.



Please choose the option Semicolon and "Continue"



On the next pop up choose Standard and you could finish the upload.

Afterwards you will get the following window. You can save now in xls-Format.

	A	B	C	D	E	F	G	H	I	J	
1	Customer_Nc	Supplier_No	Instruction_N	Instruction_N	Date	Org_Code_Ct	Org_Name_C	Plant_No	Plant_Name	Unloading_Pc	Unloa
2	***	500143	8189	0	06.10.2004	Valeo	Valeo Wischi	1134	Valeo WischiW34W1		Valeo
3	***	500143	8189	0	06.10.2004	Valeo	Valeo Wischi	1134	Valeo WischiW34W1		Valeo
4	***	500143	8189	0	06.10.2004	Valeo	Valeo Wischi	1134	Valeo WischiW34W1		Valeo
5	***	500143	8189	0	06.10.2004	Valeo	Valeo Wischi	1134	Valeo WischiW34W1		Valeo
6	***	500143	8189	0	06.10.2004	Valeo	Valeo Wischi	1134	Valeo WischiW34W1		Valeo
7	Customer_Nc	Supplier_No	Instruction_N	Instruction_N	Date	Org_Code_Ct	Org_Name_C	Plant_No	Plant_Name	Unloading_Pc	Unloa
8	***	500143	3730	0	29.09.2004	Valeo	Valeo Wischi	1134	Valeo WischiW34W1		Valeo
9	***	500143	3730	0	29.09.2004	Valeo	Valeo Wischi	1134	Valeo WischiW34W1		Valeo
10	***	500143	3730	0	29.09.2004	Valeo	Valeo Wischi	1134	Valeo WischiW34W1		Valeo
11	***	500143	3730	0	29.09.2004	Valeo	Valeo Wischi	1134	Valeo WischiW34W1		Valeo
12	***	500143	3730	0	29.09.2004	Valeo	Valeo Wischi	1134	Valeo WischiW34W1		Valeo
13	***	500143	3730	0	29.09.2004	Valeo	Valeo Wischi	1134	Valeo WischiW34W1		Valeo
14	***	500143	3730	0	29.09.2004	Valeo	Valeo Wischi	1134	Valeo WischiW34W1		Valeo
15	***	500143	3730	0	29.09.2004	Valeo	Valeo Wischi	1134	Valeo WischiW34W1		Valeo
16	***	500143	3730	0	29.09.2004	Valeo	Valeo Wischi	1134	Valeo WischiW34W1		Valeo
17	Customer_Nc	Supplier_No	Instruction_N	Instruction_N	Date	Org_Code_Ct	Org_Name_C	Plant_No	Plant_Name	Unloading_Pc	Unloa
18	***	500143	3760	0	29.09.2004	Valeo	Valeo Wischi	1134	Valeo WischiW34W1		Valeo

You can save this data now as an xls.file with the function "Save as".

Excuse me for the screen shots in german language!