



EDI IMPLEMENTATION GUIDELINE

DELJIT D96A

History of changes

Ver.	Date	Author	Reason of change	Chapter / Page
V1.0	Oct. 2005	B.K. You	Creation	
V1.1	March 2006	F. Bataille	Presentation	
V.1.2	March 2006	B.K. You	Mise-à-jour	Page 21

Send yours remarks to : supportedi@valeo.com



SOMMAIRE

- THE DELJIT MESSAGE 3**
- 1 INTRODUCTION..... 3
- 1.1 STATUS..... 3
- 1.2 PRINCIPLES 3
- 2 MESSAGE STRUCTURE CHART 5**
- 3 BRANCHING DIAGRAM 6**
- 4 SEGMENTS DESCRIPTION..... 7**
- 5 SEGMENTS LAYOUT..... 9**
- 6 EXAMPLE OF DELJIT MESSAGE 24**

THE DELJIT MESSAGE

1 INTRODUCTION

This document provides the definition of a Delivery just in time message, based on the EDIFACT Deljit D96a, to be used in Electronic Data Interchange (EDI) between a VALEO Operating Company and its Trading Partners.

This documentation is intended to be fully comprehensive and allows the implementation of the EDIFACT Deljit without the necessity for any additional standard related documentation.

1.1 STATUS

MESSAGE TYPE	: DELJIT
REFERENCE DIRECTORY	: D96A
VALEO SUBSET VERSION	: 01

1.2 PRINCIPLES

The main message running rules are the following.

This section describes each segment used in the VALEO Needs Expression message. The original ODETTE segment layout is listed. The appropriate comments relevant to the VALEO subset are indicated.

Notes:

1. The segments are presented in the sequence in which they appear in the message. The segment or segment group tag is followed by the **(M)andatory** / **(C)onditional** indicator, the maximum number of occurrences and the segment description. The conditional indicator may be completed by a **(R)required** when the segment is intended to be systematically used by VALEO for its business or transmission needs.
2. Reading from left to right, in column one, the data element tags and descriptions are shown, followed by in the second column the ODETTE status (M or C), the field format, and the picture of the data elements. These first pieces of information constitute the original ODETTE segment layout.

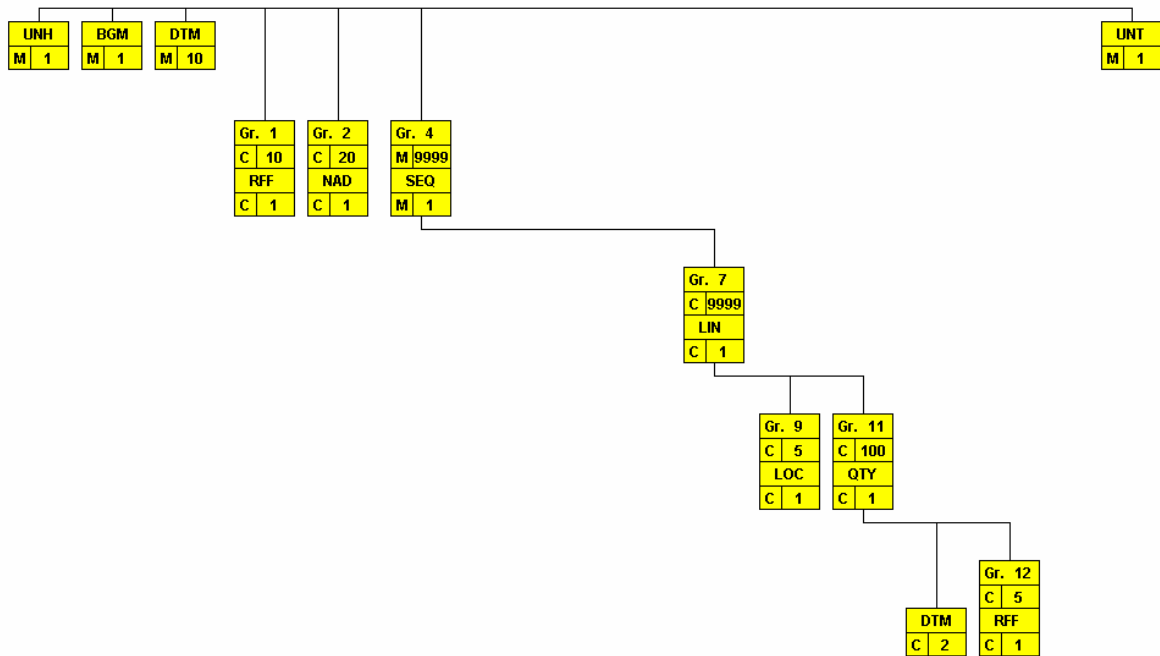
Following the ODETTE information, VALEO specific information is provided in the third and fourth columns. In the third column a status indicator for the use of (C)onditional ODETTE data elements (see 2.1 through 2.3 below), and in the fourth column notes and code values used for specific data elements in the message.

- 2.1 (M)andatory data elements in ODETTE segments retain their status in VALEO.
- 2.2 Additionally, there are two types of status for data elements with a (C)onditional ODETTE status, whether for simple, component or composite data elements. These are listed below and can be identified when relevant by the following abbreviations:
 - REQUIRED (**R**) : Indicates that the entity is required and must be sent.
 - NOT USED (**N**) : Indicates that the entity is not used and should be omitted.
- 2.3 If a composite is flagged as N, NOT USED, all data elements within that composite will have blank status indicators assigned to them.

2 MESSAGE STRUCTURE CHART

<u>Delivery Schedule Heading Section</u>				
UNH	M	1	MESSAGE HEADER	
BGM	M	1	Beginning of message	
DTM	M	1	Date/time/period	
SG1	M	1	RFF-DTM	
RFF	M	1	Reference	
SG2	M	1	NADLOC-SG3	
NAD	M	1	Name and address	
SG2	M	1	NADLOC-SG3	
NAD	M	1	Name and address	
<u>Detail Section - Location Driven Approach</u>				
SG4	M	9999	SEQ-DTM-GIR-SG7	
SEQ	M	1	Sequence details	
SG7	M	1	LIN-SG9-SG11	
LIN	M	1	Line item	
SG9	M	1	LOC	
LOC	M	1	Place/Location Identification	
SG11	M	1	QTY-DTM-SG12	
QTY	M	1	Quantity	
DTM	M	1	Date/time/period	
SG12	M	1	RFF	
RFF	M	1	Reference	
<u>Delivery Schedule Summary Section</u>				
UNT	25	M	1	MESSAGE TRAILER

3 BRANCHING DIAGRAM



4 SEGMENTS DESCRIPTION

Information to be provided in the Header section:

UNH, Message header

A service segment starting and uniquely identifying a message. The message type code for the Delivery just in time message is DELJIT.

Note: Delivery just in time messages conforming to this document must contain the following data in segment UNH, composite S009:

Data element	0065	DELJIT
	0052	D
	0054	96a
	0051	UN

BGM, Beginning of message

A segment for unique identification of the document name and its number.

DTM, Date/time/period

A segment specifying the date and, when relevant, the time/period for delivery of that sequence, relating to the whole message. The DTM segment must be specified at least once to identify the Delivery Just In Time document date.

The date/time/period segment within other Segment group should be used whenever the date/time/period requires to be logically related to another specified data item.

Segment Group 1: RFF

A group of segments giving references only relevant to the specified party rather than the whole message, e.g. contract number.

RFF, Reference

A segment for referencing documents to the whole message, e.g. contract, import/export license.

Segment Group 2: NAD-SG3

A group of segments identifying names and addresses and their functions relevant for the whole Delivery Just In Time Message.

NAD, Name and address

A segment for identifying names and addresses and their functions relevant for the whole Delivery Just In Time Message. Identification of the seller and buyer parties is recommended for the Delivery Just In Time. They are to be given in the NAD segment.

It is recommended that where possible only the coded form of the party ID should be specified. e.g. The Buyer and Seller are known to each other, thus only the coded ID is required, but the Consignee or Delivery address may vary and would have to be clearly specified, preferably in structured format.

4.1.2. Detail section

Information to be provided in the Detail section:

Segment group 4: [SEQ-SG7](#)

A group of segments providing details related to the delivery sequence. All other segments in this Segment Group 4 following the SEQ segment refer to that sequence.

[SEQ](#), Sequence details

A segment providing specific details related to the delivery sequence requested by the buyer or recipient of the product.

Segment Group 7: [LIN](#)

SG9-SG11 A group of segments providing details of the individual line items to be delivered.

[LIN](#), Line item

A segment identifying the details of the product/service being delivered e.g. product identification. All other segments in the detail section following the LIN segment refer to the line item.

Segment Group 9: [LOC](#)

A group of segments providing delivery location information and where relevant contacts.

[LOC](#), Place/location identification

A segment indicating more details regarding specific locations related to the line item.

Segment Group 11: [QTY](#)- DTM-SG12

A group of segments specifying quantity related information for actual delivery.

[QTY](#), Quantity

A segment to specify pertinent quantities relating to the line item.

[DTM](#), Date/time/period

A segment indicating the date/time/period details relating to the quantity and schedule details in the line item.

Segment Group 12: [RFF](#)

A group of segments giving references relating to the quantities.

[RFF](#), Reference

A segment for referencing the specific product release information e.g. appointment.

[UNT](#), Message trailer

A service segment ending a message, giving the total number of segments in the message and the control reference number of the message.

5 Segments Layout

This section describes each segment used in the VALEO Needs Expression message. The original EDIFACT segment layout is listed. The appropriate comments relevant to the VALEO subset are indicated.

Notes:

1. The segments are presented in the sequence in which they appear in the message. The segment or segment group tag is followed by the **(M)andatory / (C)onditional** indicator, the maximum number of occurrences and the segment description. The conditional indicator may be completed by a **(R)equired** when the segment is intended to be systematically used by VALEO for its business or transmission needs.
2. Reading from left to right, in column one, the data element tags and descriptions are shown, followed by in the second column the EDIFACT status (M or C), the field format, and the picture of the data elements. These first pieces of information constitute the original EDIFACT segment layout.

Following the EDIFACT information, VALEO specific information is provided in the third and fourth columns. In the third column a status indicator for the use of (C)onditional EDIFACT data elements, and in the fourth column notes and code values used for specific data elements in the message.

- 2.1 (M)andatory data elements in EDIFACT segments retain their status in VALEO.
- 2.2 Additionally, there are two types of status for data elements with a (C)onditional EDIFACT status, whether for simple, component or composite data elements. These are listed below and can be identified when relevant by the following abbreviations:
 - REQUIRED (**R**) : Indicates that the entity is required and must be sent.
 - NOT USED (**N**) : Indicates that the entity is not used and should be omitted.
- 2.4 If a composite is flagged as N, NOT USED, all data elements within that composite will have blank status indicators assigned to them.

UNH - M 1 - MESSAGE HEADER				
Function : To head, identify and specify a message.				
Segment number :				
		EDIFACT	VALEO	Description
0062	Message reference number	M an..14	M	Sender's unique message reference. Sequence number of messages in the interchange. DE0062 in the UNT will have the same value.
S009	MESSAGE IDENTIFIER	M	M	
0065	Message type identifier	M an..6	M	DELJIT
0052	Message type version number	M an..3	M	D
0054	Message type release number	M an..3	M	96A
0051	Controlling agency	C an..2	R	UN
0057	Association assigned code	C an..6	N	
0068	Common access reference	C an..35	N	
S010	STATUS OF THE TRANSFER	C	N	
0070	Sequence message transfer number	M n..2		
0073	First/last sequence message transfer Indication	C a1		
<u>Segment Notes.</u>				
This segment is used to head, identify and specify a message.				
DE's 0065, 0052 and 0051: indicate that the message is based on a version D96a of the Deljit Edifact message.				
Example :				
UNH+1+DELJIT:D:96A:UN'				

BGM - M		1 - Beginning of message		
Function		To indicate the type and function of a message and to transmit the identifying number.		
Segment number				
		EDIFACT	VALEO	Description
C002	DOCUMENT/MESSAGE NAME	C	R	
1001	Document/message name, coded	C an..3	R	36 = Delivery just-in-time
1131	Code list qualifier	C an..3	N	
3055	Code list responsible agency, coded	C an..3	N	
1000	Document/message name	C an..35	N	
1004	Document/message number	C an..35	R	Delivery schedule number assigned by VALEO.
1225	Message function, coded	C an..3	N	
4343	Response type, coded	C an..3	N	
<u>Segment Notes.</u>				
Example: BGM+36+0000000092'				

DTM - M		10 - Message Identification		
Function :		Date/Time/Period, give the date of the message.		
Segment number :				
		EDIFACT	VALEO	Description
010-C507	DATE/TIME/PERIOD	C 1	M	Delivery schedule number assigned by VALEO
2005	Date/time/period qualifier	C AN..3	M	137
2380	Date/time/period	C AN..35	R	CCYYDDMMHHMM
2379	Date/time/period format qualifier	C AN..3	C	203
<u>Segment Notes.</u>				
Example: DTM+137+200507250950:203'				

SG1		RFF		
RFF - M		1 - Reference		
Function		: To specify a reference.		
Segment number		:		
		EDIFACT	VALEO	Description
C506	REFERENCE	M	M	
1153	Reference qualifier	M an..3	M	ADE = Account number id
1154	Reference number	C an..35	R	
1156	Line number	C an..6	N	
4000	Reference version number	C an..35	N	
<u>Segment Notes.</u>				
Example :				
RFF+ADE:0000061778'				

SG2		NAD-SG3		
NAD - M		1 - Name and address		
Function		: To specify the name/address and their related function		
Segment number		:		
		EDIFACT	VALEO	Description
3035	Party qualifier	M an..3	M	CZ = Consignor
C082	PARTY IDENTIFICATION DETAILS	C	R	
3039	Party id. identification	M an..35	M	Identification of Sender
1131	Code list qualifier	C an..3	C	
3055	Code list responsible agency, coded	C an..3	R	5=code assigned by sender
C058	NAME AND ADDRESS	C	N	
3124	Name and address line	M an..35		
3124	Name and address line	C an..35		
3124	Name and address line	C an..35		
3124	Name and address line	C an..35		
3124	Name and address line	C an..35		
C080	PARTY NAME	C	R	
3036	Party name	M an..35	N	
3036	Party name	C an..35	N	
3036	Party name	C an..35	N	
3036	Party name	C an..35	N	
3036	Party name	C an..35	N	
3045	Party name format, coded	C an..3	N	
C059	STREET	C	N	
3042	Street and number/p.o. box	M an..35		
3042	Street and number/p.o. box	C an..35		
3042	Street and number/p.o. box	C an..35		
3042	Street and number/p.o. box	C an..35		
3164	City name	C an..35	N	
3229	Country sub-entity identification	C an..9	N	
3251	Postcode identification	C an..9	N	
3207	Country, coded	C an..3	N	
<u>Segment Notes.</u>				
This segment is used to indicate the trading parties involved in the Delivery Schedule process. Party which, by contract with a carrier, consigns or sends goods with the carrier, or has them conveyed by him. Synonym: shipper, sender. Example : NAD+CZ+094226131056::5'				

SG2		NAD-SG3		
NAD - M		1 - Name and address		
Function		: To specify the name/address and their related function		
Segment number		:		
		EDIFACT	VALEO	Description
3035	Party qualifier	M an..3	M	CN = Consignee
C082	PARTY IDENTIFICATION DETAILS	C	R	
3039	Party id. identification	M an..35	M	VALEO internal number of the seller
1131	Code list qualifier	C an..3	N	
3055	Code list responsible agency, coded	C an..3	R	10=code assigned by buyer
C058	NAME AND ADDRESS	C	N	
3124	Name and address line	M an..35		
3124	Name and address line	C an..35		
3124	Name and address line	C an..35		
3124	Name and address line	C an..35		
3124	Name and address line	C an..35		
C080	PARTY NAME	C	R	
3036	Party name	M an..35	M	Consignee's name, clear text
3036	Party name	C an..35	N	
3036	Party name	C an..35	N	
3036	Party name	C an..35	N	
3036	Party name	C an..35	N	
3045	Party name format, coded	C an..3	N	
C059	STREET	C	N	
3042	Street and number/p.o. box	M an..35		
3042	Street and number/p.o. box	C an..35		
3042	Street and number/p.o. box	C an..35		
3042	Street and number/p.o. box	C an..35		
3164	City name	C an..35	N	
3229	Country sub-entity identification	C an..9	N	
3251	Postcode identification	C an..9	N	
3207	Country, coded	C an..3	N	
<u>Segment Notes.</u>				
This segment is used to indicate the trading parties involved in the Delivery Schedule process. Party to which goods are consigned.				
Example :				
NAD+CN+0000401153::10' '				

SG4		SEQ-SG7		
SEQ - M		2 - SEQ Details		
Function		: Sequence details		
Segment number		:		
		EDIFACT	VALEO	Description
1245	Status indicator, coded	C 1	R	3
C286	SEQUENCE INFORMATION	C	N	
1050	Sequence number	M an...6		
1159	Sequence number source, coded	C an...3		
1131	Code list qualifier	C an...3		
3055	Code list responsible agency, coded	C an...3		
<u>Segment Notes.</u>				
Example :				
SEQ+3'				

SG7		LIN		
LIN - M		1 - Line item		
Function		: To identify a line item and configuration.		
Segment number		:		
		EDIFACT	VALEO	Description
1082	Line item number	C n..6	C	
1229	Action request/notification, coded	C an..3	C	
C212	ITEM NUMBER IDENTIFICATION	C	R	
7140	Item number	C an..35	R	VALEO article number
7143	Item number type, coded	C an..3	R	IN
1131	Code list qualifier	C an..3	C	
3055	Code list responsible agency, coded	C an..3	C	
C829	SUB-LINE INFORMATION	C	C	
5495	Sub-line indicator, coded	C an..3		
1082	Line item number	C n..6		
1222	Configuration level	C n..2	C	
7083	Configuration, coded	C an..3	C	
<u>Segment Notes.</u>				
Example :				
LIN+++F654639T:IN'				

SG9		LOC		
LOC - M		1- Place/location identification		
Function		To identify a country/place/location/related location one/related location two.		
Segment number :				
		EDIFACT	VALEO	Description
3227	Place/location qualifier	M an..3	M	11 = Place of discharge
C517	LOCATION IDENTIFICATION	C	R	
3225	Place/location identification	C an..25	R	VALEO codification of the unloading point
1131	Code list qualifier	C an..3	N	
3055	Code list responsible agency, coded	C an..3	N	
3224	Place/location	C an..70	N	
C519	RELATED LOCATION ONE IDENTIFICATION	C	N	
3223	Related place/location one identification	C an..25		
1131	Code list qualifier	C an..3		
3055	Code list responsible agency, coded	C an..3		
3222	Related place/location one	C an..70		
C553	RELATED LOCATION TWO IDENTIFICATION	C	N	
3233	Related place/location two identification	C an..25		
1131	Code list qualifier	C an..3		
3055	Code list responsible agency, coded	C an..3		
3232	Related place/location two	C an..70		
5479	Relation, coded	C an..3	N	
<u>Segment Notes.</u>				
Example :				
LOC+11+ZEBRAK'				

SG12		QTY--DTM-SG12		
QTY - M		1 - Quantity		
Function		: To specify a pertinent quantity.		
Segment number		:		
		EDIFACT	VALEO	Description
C186	QUANTITY DETAILS	M	M	
6063	Quantity qualifier	M an..3	M	131 = Quantity required to be delivered
6060	Quantity	M n..15	M	
6411	Measure unit qualifier	C an..3	C	
Example : QTY+131:1500'				

DTM - M 10 - Message Identification				
Function : Date/Time/Period, give the date of the message.				
Segment number :				
		EDIFACT	VALEO	Description
010-C507	DATE/TIME/PERIOD	C 1	M	Delivery schedule number assigned by VALEO
2005	Date/time/period qualifier	C AN..3	M	2 : requested date
2380	Date/time/period	C AN..35	R	CCYYDDMMHHMM
2379	Date/time/period format qualifier	C AN..3	C	203
<u>Segment Notes.</u>				
Example: DTM+2+200507250950:203'				

SG12		RFF		
RFF - M		1 - Reference		
Function		: To specify a reference.		
Segment number		:		
		EDIFACT	VALEO	Description
C506	REFERENCE	M	M	
1153	Reference qualifier	M an..3	M	CW = Package number
1154	Reference number	C an..35	R	
1156	Line number	C an..6	N	
4000	Reference version number	C an..35	N	
<u>Segment Notes.</u>				
VALEO will provide within this segment the number of Package number (KANBAN Card).				
Example :				
RFF+CW:0000000031'				

SG12		RFF		
RFF - M		1 - Reference		
Function		: To specify a reference.		
Segment number		:		
		EDIFACT	VALEO	Description
C506	REFERENCE	M	M	
1153	Reference qualifier	M an..3	M	ON = Order number
1154	Reference number	C an..35	R	
1156	Line number	C an..6	C	Line Number of Purchase document
4000	Reference version number	C an..35	C	Initial Supplier code for plate-form
<u>Segment Notes.</u>				
Example :				
RFF+ON:5500000010:00010:0000100007'				

UNT - M 1 - MESSAGE TRAILER				
Function : To end and check the completeness of a message.				
Segment number :				
		EDIFACT	VALEO	Description
0074	Number of segments in a message	M n..6	M	The total number of segments in the message is detailed here.
0062	Message reference number	M an..14	M	The message reference number detailed here should equal the one specified in the UNH segment.
<u>Segment Notes.</u>				
This segment is a mandatory UN/ODETTE segment. It must always be the last segment in the message.				
Example :				
UNT+10+1'				

6 EXAMPLE OF DELJIT MESSAGE

UNB+UNOA:3+12406619+SUPPLIER_UNB+200508:1549+000000017'	
UNH+1+DELJIT:D:96A:UN:A10011'	Message header
BGM+242+0000000092'	Delivery just-in-time
DTM+137:200507250950:203'	Date/time when a document/message is issued. This may include authentication.
RFF+ADE:0000401153'	Supplier account number
NAD+CZ+094226131056::5'	Party which, by contract with a carrier, consigns or sends goods with the carrier, or has them conveyed by him. Synonym: shipper, sender.
NAD+CN+0000401153::10'	The consignee is identified by the Odette code
SEQ+3'	
LIN+++F654639T:IN'	The first product in the schedule is identified by the VALEO article number
LOC+11+ZEBRAK'	Unloading point
QTY+131:1500'	Quantity required to be delivered.
DTM+2:200507251349:203'	Date on which buyer requests goods to be delivered.
RFF+ON:5500000010:00010:0000100007'	Order number
RFF+CW:0000000031'	Reference number identifying a package or carton within a consignment.
UNT+13+1'	Total of 13 segments in the message
UNZ+1+000000017'	

END OF DOCUMENT
