



EDI IMPLEMENTATION GUIDELINES

INVRPT EDIFACT D97A

History of changes

Ver.	Date	Author	Reason of change	Chapter / Page
V1.0		Bietigheim	Creation	
V1.1	Sept. 2005	B.K. You	Update	
V2.0	Feb. 2007	T. NGUYEN	Packaging information added	Segment Group 15, Segment Group 16, Segment Group 17

Send yours remarks to : supportedi@valeo.com

Table of Contents

TITLE	PAGE
UNB - Interchange Header	8
UNH - Message Header	10
BGM - Beginning of Message	11
Segment Group 2	13
NAD - Name and Address	14
RFF - Reference	15
LOC - Place/Location Identification	15
Segment Group 9	16
LIN - Line Item	17
RFF - Reference	18
Segment Group 11	19
INV - Inventory Management Related Details	20
QTY - Quantity	22
DTM - Date/Time/Period	23
Segment Group 14	24
RFF - Reference	24
Segment Group 15	25
CPS - Consignment packing sequence	25
Segment Group 16	26
PAC - Package	26
QTY - Quantity	27
Segment Group 17	28
PCI - Package identification	28
RFF - Reference	29
GIN - Goods identity number	30
UNT - Message Trailer	31
UNZ - Interchange Trailer	32
Example	33

HOW TO USE THIS DOCUMENT

The UN/EDIFACT Standards Manual contains complete descriptions of the Data Elements and Segments (collectively known as data) used in this guideline.

Segment/Data Element Usage

- (M) Mandatory = EDIFACT mandated. The Data Element or Segment must be present.
- (R) Required = EDIFICE members agreement. The Data Element or Segment must be present.
- (D) Depending = The data concerned must be sent if a particular defined condition or set of conditions exists. The associated conditions must be explained at the appropriate level of detail.
- (A) Advised = Indicates that the RECEIVER of the message would prefer the data concerned to be sent, but does not require its transmission.
- (O) Optional = Indicates that the transmission of the data concerned is at the need or discretion of the SENDER, i.e. it is not required by the receiver in order to perform its business function. EDIFICE requires that the use of 'O' must be agreed between trading partners.
- (X) Not Used = The Data Element or Segment will not be used by EDIFICE members.

The EDIFICE usage status and number of occurrences for segments or segment groups will be represented in this document as follows:

- e.g.: R3 The segment or group is required 3 times (fixed number)
R..3 The segment or group is required up to 3 times (maximum number)

Data Element Representation

- (a) Alpha
- (an) Alpha Numeric
- (n) Numeric

ENVELOPING – INVENTORY REPORT (INVRPT)

SEG	NAME	REQ DES	MAX USE	LOOP REPEAT
UNB	Interchange header	M	1	
UNH	Message header	M	1	
BGM	Beginning of message	M	1	
FTX	Free text	C	99	
DTM	Date/time/period	M	1...10	
SEGMENT GROUP 2				R..20
NAD	Name and address	M	1	
LOC	Place/Location/ identification	C	5	
SEGMENT GROUP 3				C..99
RFF	Reference	M	1	
DTM	Date/Time/Periode	C	1	
SEGMENT GROUP 4				C..10
CTA	Contact information	M	1	
COM	Communication contact	C	5	
SEGMENT GROUP 5				C..5
CUX	Currencies	M	1	
DTM	Date/Time/Periode	C	1	
SEGMENT GROUP 6				C..9999
CPS	Consignment packing sequence	M	1	
SEGMENT GROUP 7				C..999
PAC	Package	M	1	
PCI	Package identification	C	1000	
SEGMENT GROUP 8				C..9999
QTY	Quantity	M	1	
GIN	Goods identity number	C	9999	
DTM	Date/Time/Periode	C	5	

SEGMENT GROUP 9				R..9999
LIN	Line item	M	1	
PIA	Additional product id	D	10	
IMD	Item description	C	10	
NAD	Name and Address	C	1	
MEA	Measurements	C	10	
ALI	Additional Information	C	10	
LOC	Place/Location Identification	C	5	
DTM	Date/Time/Period	C	5	
FTX	Free Text	C	99	

SEGMENT GROUP 10				C..10
RFF	Reference	M	1	
DTM	Date/Time/Period	C	1	

SEGMENT GROUP 11				R..9999
INV	Inventory management related details	M	1	
QTY	Quantity	M	1	
GIN	Good Identity number	C	5	
LOC	Place/Location identification	C	5	
DTM	Date/time/period	C	5	
STS	Status	C	9	

SEGMENT GROUP 12				R..5
NAD	Name and Address	M	1	
LOC	Place/Location Identification	C	1	

SEGMENT GROUP 13				R..5
PRI	Price details	C	1	
CUX	Currencies	C	1	
DTM	Date/time/period	C	1	

SEGMENT GROUP 14				R..10
RFF	Reference	M	1	
DTM	Date/time/period	C	1	

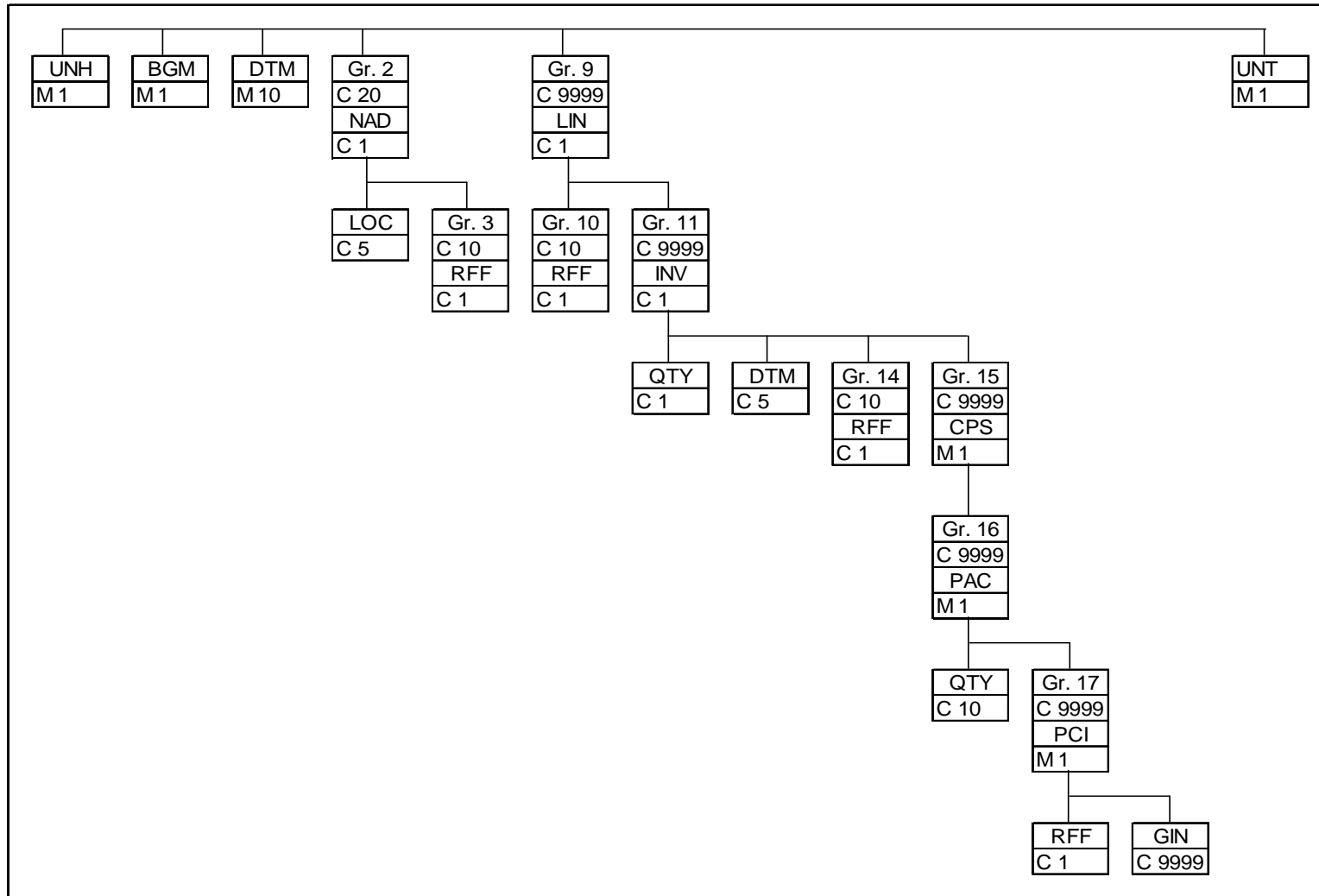
SEGMENT GROUP 15				R9999
CPS	Consignment packing	M	1	

SEGMENT GROUP 16				C 9999
PAC	Package	M	1	
MEA	Measurements	C	10	
QTY	Quantity	C	10	

SEGMENT GROUP 17				C 9999
PCI	Package	M	1	

RFF	Reference	C	1
DTM	Date/time/period	C	5
GIN	Good Identify	C	9999
UNT	Message trailer	M	1
UNZ	Interchange trailer	M	1

BRANCHING DIAGRAM



UNB - Interchange Header

Function: To head, identify and specify an interchange.

Usage: M1

Remarks:

Field #	Ref.	Field	Usage	
UNB01	S001	SYNTAX IDENTIFIER	M	
	0001	Syntax identifier	M	'UNOA'
	0002	Syntax version number	M	'2'
UNB02	S002	INTERCHANGE SENDER	M	
	0004	Sender identification	M	See Note 1
	0007	Identification code qualifier	A	See Note 1 & Note 6
	0008	Address for reverse routing	O	See Note 2
UNB03	S003	INTERCHANGE RECIPIENT	M	
	0010	Recipient identification code	M	See Note 3
	0007	Identification code qualifier	A	See Note 3 & Note 6
	0014	Routing address	O	See Note 4
UNB04	S004	DATE/TIME OF PREPARATION	M	
	0017	Date	M	Creation date of interchange; YYMMDD
	0019	Time	M	Creation time of interchange; HHMM
UNB05	0020	INTERCHANGE CONTROL REFERENCE	M	See Note 5
UNB06	S005	RECIPIENTS REFERENCE PASSWORD	O	
	0022	Recipient's reference/ password	M	
	0025	Recipient's reference/ password qualifier	O	
UNB07	0026	APPLICATION REFERENCE	A	See UNH0201
UNB08	0029	PROCESSING PRIORITY CODE	N	
UNB09	0031	ACKNOWLEDGMENT REQUESTS	O	
UNB10	0032	COMMUNICATION AGREEMENT	O	
UNB11	0035	TEST INDICATOR	D	'1' if interchange is a test transmission, else not used

UNB - Interchange Header (continued)

UNB Notes:

1. The Sender Address.
The combination of DE S002-0004 (Sender Identification) & DE S002-0007 (Identification Code Qualifier) is the unique identifier of the originator of the interchange. This can be an application, gateway or clearing center. The combination of the “Sender Identification” and the “Identification Code Qualifier” is called “The Sender Address”.
2. The Address for Reverse Routing.
In case where the originator of the interchange is a gateway or clearing center, DE S002-0008 (Address for Reverse Routing) can be used to define the originator of the message(s) within the interchange. Multiple Addresses for reverse routing can be used with one Sender Address.
3. The Recipient Address.
The combination of DE S003-0010 (Recipient Identification) & DE S003-0007 (Identification Code Qualifier) is the unique identifier of the recipient of the interchange. This can be an application, gateway or clearing center. The combination of the “Recipient Identification” and the “Identification Code Qualifier” is called “The Recipient Address”.
4. The Routing Address.
In case where the recipient of the interchange is a gateway or clearing center, DE S003-0014 (Routing Address) can be used to define the final recipient of the message(s). Multiple Routing addresses can be used with one Recipient Address.
5. Using the Interchange Control Reference:
Normal procedure: Sequential numbering per trading partner relationship. The interchange control reference is a numeric value starting at 1 for the first transmission using a specific Sender Address - Recipient Address combination (as defined above). The interchange control reference is incremented by 1 for each new transmission using the same Sender Address - Recipient Address combination.

Special agreement Procedure:
Sequential numbering for multiple trading partner relationships in use between the same business partners. If two business partners use multiple Trading Partner Relationship combinations between them, they can decide to use one sequential interchange counter for multiple Sender & Recipient address combinations. The different Sender & Recipient address combinations should be specified in an interchange agreement.
6. Codification of the Sender or Recipient Identifications.
EDIFICE advises users to use the correct qualifiers matching the selected Identification codes. Please refer to EDIFACT code set 0007 for the correct qualifier of your “Identifier(s)”.

UNH – Message Header

Function: To head, identify and specify a message.

Usage: M1

Remarks:

Field #	Ref.	Rep.	Field	Usage	Utilization
UNH01	0062	an..14	MESSAGE REFERENCE NUMBER	M	See Note 1
UNH02	S009		MESSAGE IDENTIFIER	M	'INVRPT' 'D' '97A' 'UN' 'EDFI01'
	0065	an..6	Message type identifier	M	
	0052	an..3	Message type version number	M	
	0054	an..3	Message type release number	M	
	0051	an..2	Controlling agency	M	
	0057	an..6	Association assigned code	R	
UNH03	0068	an..35	COMMON ACCESS REFERENCE	X	
UNH04	S010		STATUS OF THE TRANSFER	O	
	0070	n..2	Sequence message transfer number	M	
	0073	a..1	First/last sequence message transfer indication	O	

UNH Notes

1. DE 0062 MESSAGE REFERENCE NUMBER
Transmission message count from 1

BGM - Beginning of Message

Function: To indicate the beginning of the Inventory Report message and to transmit the Inventory Report number.

Usage: M1

Remarks: In addition to the two types of Inventory Reports serving different purposes, that is, for inventory management and for financial reconciliation, there are differences in the data points on the daily (when BGM01:01 = 35) and on the financial (when BGM01:01 = 130) INVRPTs which are noted throughout this document.

Field #	Ref.	Rep.	Field	Usage	Utilization
BGM01	C002		DOCUMENT/MESSAGE NAME	R	See Note 1
	1001	an..3	Document/message name, coded	R	
	1131	an..3	Code list qualifier	X	
	3055	an..3	Code list responsible agency, coded	X	
	1000	an..35	Document/message name	X	
BGM02	1004	an..35	DOCUMENT/MESSAGE NUMBER	R	Inventory Report number
BGM03	1225	an..3	MESSAGE FUNCTION, CODED	R	'9' Original
BGM04	4343	an..3	RESPONSE TYPE, CODED	X	

BGM Notes

1. DE 1001 DOCUMENT/MESSAGE NAME, CODED

'35' Inventory report

Note: Sent daily from VALEO ERP system (Material Management module) for inventory management. Based on the actual pull signal.

DTM - Date/Time/Period

Function: To specify local date/time of creation of the message.

Usage: M1

Remarks:

Field #	Ref.	Rep.	Field	Usage	Utilization
DTM01	C507		DATE/TIME PERIOD	M	
	2005	an..3	Date/time/period qualifier	M	'137' Document/message date/time
	2380	an..35	Date/time/period	R	Document creation date/time
	2379	an..3	Date/time/period format qualifier	R	'204' CCYYMMDDMMHHSS

Segment Group 2

Function: To identify the parties as they apply to the Inventory Report message.

Usage: R..20

Remarks:

SEG	NAME	REQ DES	MAX USE	LOOP REPEAT
-----	------	------------	------------	-------------

	SEGMENT GROUP 2			R..20
NAD	Name and Address	M	1	

Segment Group 2

NAD - Name and Address

Function: To specify the identification of the parties involved in the Inventory Report message.

Usage: M1

Remarks:

Field #	Ref.	Rep.	Field	Usage	Utilization
NAD01	3035	an..3	PARTY QUALIFIER	M	'BY' Buyer, 'SE' Seller, 'CN' Consignee
NAD02	C082		PARTY IDENTIFICATION DETAILS	A	
	3039	an..17	Party id identification	M	Supplier identification
	1131	an..3	Code list qualifier	X	
	3055	an..3	Code list responsible agency, coded	R	'92' Assigned by buyer or buyer's agent
NAD03	C058		NAME AND ADDRESS	D	
	3124	an..35	Name and address line	M	
	3124	an..35	Name and address line	O	
	3124	an..35	Name and address line	O	
	3124	an..35	Name and address line	O	
	3124	an..35	Name and address line	O	
NAD04	C080		PARTY NAME	D	
	3036	an..35	Party name	M	
	3036	an..35	Party name	O	
	3036	an..35	Party name	O	
	3036	an..35	Party name	O	
	3036	an..35	Party name	O	
	3045	an..3	Party name format, coded	X	
NAD05	C059		STREET	D	
	3042	an..35	Street and number/P.O. Box	M	
	3042	an..35	Street and number/P.O. Box	O	
	3042	an..35	Street and number/P.O. Box	O	
NAD06	3164	an..35	CITY NAME	D	
NAD07	3229	an..9	COUNTRY SUB-ENTITY IDENTIFICATION	D	
NAD08	3251	an..9	POSTCODE IDENTIFICATION	D	
NAD09	3207	an..3	COUNTRY, CODED	D	See ISO 3166 2 alpha code

Segment Group 2

RFF - Reference

Function: A segment for referencing documents relating to the whole inventory report message.

Usage: M1

Remarks:

Field #	Ref.	Rep.	Field	Usage	Utilization
RFF01	C506		REFERENCE	M	
	1153	an..3	Reference qualifier	M	'ADE' Account Number
	1154	an..35	Reference number	R	Supplier internal number. COFOR
	1156	an..6	Line number	X	Not used

LOC – Place/Location Identification

Function: A segment giving more specific location information in addition to the address specified in the NAD segment.

Usage: O..5

Remarks:

Field #	Ref.	Rep.	Field	Usage	Utilization
LOC01	3227	an..3	PLACE/LOCATION QUALIFIER	M	"11"
LOC02	C517		LOCATION IDENTIFICATION	A	
	3225	an..17	Place/location identification	M	
	1131	an..3	Code list qualifier	X	
	3055	an..3	Code list responsible agency, coded	C	

Segment Group 9

Function: A group of segments containing part information, quantities and dates.

Usage: M1

Remarks:

SEG	NAME	REQ DES	MAX USE	LOOP REPEAT
	SEGMENT GROUP 9			R..9999
LIN	Line item	M	1	
	SEGMENT GROUP 10			R..9999
RFF	Reference			
	SEGMENT GROUP 11			R..9999
INV	Inventory management related details	M	1	
QTY	Quantity	M	1	
DTM	Date/time/period	R	1	
	SEGMENT GROUP 14		R..10	
RFF	Reference	M	1	

Segment Group 9

LIN - Line Item

Function: To identify a line item being described and the line item number agreed to be the primary reference number between the Buyer and Seller.

Usage: M1

Remarks:

Field #	Ref.	Rep.	Field	Usage	Utilization
LIN01	1082	n..6	LINE ITEM NUMBER	R	See Note 1
LIN02	1229	an..3	ACTION REQUEST/ NOTIFICATION, CODED	X	
LIN03	C212 7140 7143 1131 3055	an..35 an..3 an..3 an..3	ITEM NUMBER IDENTIFICATION Item number Item number type, coded Code list qualifier Code list responsible agency, coded	A R R X R	Buyer Part Number 'BP' Buyer part number '92' Assigned by buyer or buyer's agent
LIN04	5495	an..3	SUB-LINE INDICATOR, CODED	X	
LIN05	1222	n..2	CONFIGURATION LEVEL	X	
LIN06	7083	an..3	CONFIGURATION, CODED	X	

LIN Notes

1. DE 1082 LINE ITEM NUMBER

The first line item within a message will be numbered '1' and further line items will be incremented by '1' for each new line.

Segment Group 9

RFF - Reference

Function: A segment for referencing documents relating to the whole inventory report message.

Usage: M1

Remarks:

Field #	Ref.	Rep.	Field	Usage	Utilization
RFF01	C506		REFERENCE	M	
	1153	an..3	Reference qualifier	M	'ON' Order Number
	1154	an..35	Reference number	R	Order number
	1156	an..6	Line number	X	Not used



Segment Group 11

Function: A group of segments specifying quantity and date information for inventory movement or inventory status of the line item.

Usage: R..9999

Remarks:

SEG	NAME	REQ DES	MAX USE	LOOP REPEAT
	SEGMENT GROUP 11			R..9999
INV	Inventory management related details	M	1	
QTY	Quantity	M	1	
LOC	Place/Location identification	O	..5	
DTM	Date/time/period	R	1	

Segment Group 11

INV – Inventory Management Related Details

Function: To specify reason for the withdrawal and on-hand quantity related to a line item.

Usage: M1

Remarks:

Field #	Ref.	Rep.	Field	Usage	Utilization
INV01	4501	an..3	INVENTORY MOVEMENT DIRECTION, CODED	X	
INV02	7491	an..3	TYPE OF INVENTORY AFFECTED, CODED	X	
INV03	4499	an..3	REASON FOR INVENTORY MOVEMENT, CODED	D	See Note 1
INV04	4503	an..3	INVENTORY BALANCE METHOD, CODED	D	See Note 2

INV Notes:

1. DE 4499 REASON FOR INVENTORY MOVEMENT, CODED

‘1’ Material received into consignment location Note: **** On Daily INVRPT ONLY ****
When INV03:01 = ‘1’ then
QTY01:01 = ‘48’ (Received quantity)

‘11’ Material consumed from consignment location
When INV03:01 = ‘11’ then
QTY01:01 = ‘2’ (Charge; individual material pulls), or
QTY01:01 = ‘3’ (Cumulative quantity; summation of material pulls on document)

‘7’ Correction to material quantity in consignment location
When INV03:01 = ‘7’ then
QTY01:01 = ‘214’ (Transferred in quantity; movement back to consignment location), or
QTY01:01 = ‘213’ (Transferred out quantity; movement out of consignment location)

2. DE 4503 INVENTORY BALANCE METHOD, CODED

‘2’ Current material quantity on hand by storage location Note: **** On Daily INVRPT ONLY ****
When INV04:01 = ‘2’ then
QTY01:01 = ‘152’ (Quantity on hand in specific storage location; see LOC segment)

‘1’ Current available material quantity in consignment location
When INV04:01 = ‘1’ then
QTY01:01 = ‘17’ (Quantity on hand)
Note: Total quantity on hand (the sum of all QTY01:01 = ‘152’).

Remarque : Every movements of stock (1, 11 or 7) is followed by the balance of stock thus the date of the balance corresponds to the date and the hour of the movement

Segment Group 11

QTY - Quantity

Function: To specify the withdrawal and on-hand quantity related to a line item.

Usage: M1

Remarks:

Field #	Ref.	Rep.	Field	Usage	Utilization
QTY01	C186		QUANTITY DETAILS	M	
	6063	an..3	Quantity qualifier	M	See Note 1
	6060	n..15	Quantity	M	Movement quantity
	6411	an..3	Measure unit qualifier	O	

QTY Notes:

1. DE 6063 QUANTITY QUALIFIER

'48' Received quantity
When INV03:01 = '1' (Receipts) then
QTY01:01 = '48'

Note: **** On Daily INVRPT ONLY ****

'2' Charge
When INV03:01 = '11' (Consumption) then
QTY01:01 = '2'

'3' Cumulative quantity
When INV03:01 = '11' (Consumption) then
QTY01:01 = '3'

'214' Transferred in quantity
When INV03:01 = '7' (Corrections) then
QTY01:01 = '214'

'213' Transferred out quantity
When INV03:01 = '7' (Corrections) then
QTY01:01 = '213'

Note: **** On Daily INVRPT ONLY ****

Note: Transferred out quantity (QTY01:01 = 213) on the Daily INVRPT is classified as a charge (QTY01:01 = 2) on the Financial INVRPT.

'17' Quantity on hand
When INV04:01 = '1' (Inventory balance) then
QTY01:01 = '17'

Note: Only one occurrence.

DTM - Date/Time/Period

Function: To specify the local date/time of consumption and quantity on hand.

Usage: R1

Remarks:

Field #	Ref.	Rep.	Field	Usage	Utilization
DTM01	C507		DATE/TIME PERIOD	M	
	2005	an..3	Date/time/period qualifier	M	'145' Event date/time
	2380	an..35	Date/time/period	R	Date/time applied to quantity
	2379	an..3	Date/time/period format qualifier	R	'204' CCYYMMDDHHMMSS

Segment Group 14

RFF - Reference

Function: A segment for referencing the specific product release information.

Usage: M1

Remarks:

Field #	Ref.	Rep.	Field	Usage	Utilization
RFF01	C506		REFERENCE	M	
	1153	an..3	Reference qualifier	M	See Note 1
	1154	an..35	Reference number	R	Appropriate reference number
	1156	an..6	Line number	D	Movement type code; see Note 2

RFF Notes:

1. DE 1153 REFERENCE QUALIFIER

For material receipts (INV03:01 = 1)
'DR' Dock receipt number

Note: **** On Daily INVRPT ONLY ****

For all material movements (INV03:01 = 11 and 7)
'TN' Transaction reference number

'ZZZ' Material settlement document number Note: **** On Financial INVRPT ONLY ****
Note: This billing/invoice number is used to reconcile remittance details on payments.

In addition, for material returns to vendor (INV03:01 = 7)
'ALQ' Returns notice number

2. DE 1156 LINE NUMBER

Movement type code

Note: When material is consumed or transferred (INV03:01 = 11 or 7) and when the number referenced is the transaction number (RFF01:01 = TN) then this value (DE 1156 Line Number) is the movement type code. These codes identify the type of material movement associated with the different material moves, e.g., receipts, pulls and adjustments in/out. Codes supplied on request.

Segment Group 15

CPS – Consignment packing sequence

Function: A segment identifying the sequence in which packing has been done, e.g., handling unit (pallet), package(box).

Usage: M1

Remarks:

Field #	Ref.	Rep.	Field	Usage	Utilization
CPS01	7164	an..12	HIERARCHICAL ID. NUMBER	M	See notes 1
	7166	an..12	HIERARCHICAL PARENT ID	X	
	7075	an..3	PACKAGING LEVEL, CODED	R	'1' Inner

CPS Notes

1. DE 7164 HIERARCHICAL ID. NUMBER
Should refer to LIN segment (group 9) field 1082 LINE ITEM NUMBER

Segment Group 16 PAC - Package

Function: A segment specifying the number and type of packages (physical units and the physical type of packaging).

Usage: M1

Remarks:

Field #	Ref.	Rep.	Field	Usage	Utilization
PAC01	7224	an..8	NUMBER OF PACKAGES	R	Quantity
PAC02	C531		PACKAGING DETAILS	X	
	7075	an..3	Packaging level, coded	X	
	7233	an..3	Packaging related information, coded	X	
	7073	an..3	Packaging terms and conditions, coded	X	
PAC03	C202		PACKAGING TYPE	X	
	7065	an..17	Type of packages identification	X	
	1131	an..3	Code list qualifier	X	
	3055	an..3	Code list responsible agency, coded	X	
	7064	an..35	Type of packages	X	
PAC04	C402		PACKAGE TYPE IDENTIFICATION	O	'A' Free-form long description Description
	7077	an..3	Item description type, coded	M	
	7064	an..35	Type of packages	M	
	7143	an..3	Item number type, coded	X	
	7064	an..35	Type of packages	X	
	7143	an..3	Item number type, coded	X	
PAC05	C532		RETURNABLE PACKAGE DETAILS	X	
	8395	an..3	Returnable package freight payment	X	
	8393	an..3	Returnable package load contents, coded	X	

Segment Group 16

QTY - Quantity

Function: A segment to specify the quantity per package described in the PAC segment.

Usage: C10

Remarks:

Field #	Ref.	Rep.	Field	Usage	Utilization
QTY01	C186		QUANTITY DETAILS	M	
	6063	an..3	Quantity qualifier	M	'52' Quantity per pack
	6060	n..15	Quantity	M	Quantity
	6411	an..3	Measure unit qualifier	O	

Segment Group 17

PCI – Package identification

Function: A segment specifying markings and / or labels used on individual physical units (packages) described in the PAC segment.

Usage: M1

Remarks:

Field #	Ref.	Rep.	Field	Usage	Utilization
PCI01	4233	an..3	MARKING INSTRUCTIONS, CODED	R	'17' Seller's instructions
PCI02	C210		MARKS & LABELS	X	
	7102	an..35	Shipping marks	X	
	7102	an..35	Shipping marks	X	
	7102	an..35	Shipping marks	X	
	7102	an..35	Shipping marks	X	
	7102	an..35	Shipping marks	X	
	7102	an..35	Shipping marks	X	
	7102	an..35	Shipping marks	X	
	7102	an..35	Shipping marks	X	
	7102	an..35	Shipping marks	X	
	7102	an..35	Shipping marks	X	
PCI03	8275	an..3	CONTAINER/PACKAGE STATUS, CODED	X	
PCI04	C827		TYPE OF MARKING	X	
	7511	an..3	Type of marking, coded	X	
	1131	an..3	Code list qualifier	X	
	3055	an..3	Code list responsible agency, coded	X	

Segment Group 17

RFF - Reference

Function: A segment for referencing the package identification e.g. master label number.

Usage: C1

Remarks:

Field #	Ref.	Rep.	Field	Usage	Utilization
RFF01	C506		REFERENCE	M	'AAT' Master label number
	1153	an..3	Reference qualifier	M	
	1154	an..35	Reference number	R	
	1156	an..6	Line number	X	

Segment Group 17

GIN - Goods identity number

Function: A segment to provide serial, batch, label or packaging number. These may be simple numbers or ranges of numbers.

Usage: C9999

Remarks:

Field #	Ref.	Rep.	Field	Usage	Utilization
GIN01	7405	an..3	IDENTITY NUMBER QUALIFIER	M	See notes 1
GIN02	C208		IDENTITY NUMBER RANGE	M	See notes 2
	7402	an..35	Identity number	M	
	7402	an..35	Identity number	X	

GIN Notes

- DE 7405 IDENTITY NUMBER QUALIFIER
'BX': Batch number
- DE 7402 IDENTITY NUMBER
In case of Simplified Shipping Unit, contains the same data as RFF01 1154 Reference number

UNT - Message Trailer

Function: To end and check the completeness of a message.

Usage: M1

Remarks: Refer to EDIFICE Utilization of the EDIFACT Service Segments, Issue 2.

Field #	Ref.	Rep.	Field	Usage	Utilization
UNT01	0074	n..6	NUMBER OF SEGMENTS IN A MESSAGE	M	
UNT02	0062	an..14	MESSAGE REFERENCE NUMBER	M	

UNZ - Interchange Trailer

Function: To end and enable checking of the completeness of an interchange.

Usage: M1

Remarks:

Field #	Ref.	Rep.	Field	Usage	Utilization
UNZ01	0036	n..6	INTERCHANGE CONTROL COUNT	M	Count of all messages in the interchange
UNZ02	0020	an..14	INTERCHANGE CONTROL REFERENCE	M	Same ref. # as in DE 0020 of the UNB segment.

Example

UNB+UNOA:2+1331312108TM01+SEFNA.FNA001+070206:1238+164'
UNH+1+INVRPT:D:97A:UN:EDFI01'
BGM+35+0180288926+9'
DTM+137:20070109000000:204'
NAD+SE+0000300038::92+SAPA HEAT TRANSFER AB++S-612 81, 19833+FINSPANG++612 81+SE'
LOC+11'
RFF+ADE:0000300038'
NAD+BY+093133131210800052::92+VALEO SYSTEMES THERMIQUES - RE++9, RUE DU COLONEL
CHARBONNEAUX+REIMS CEDEX++51057+FR'
NAD+CN+093133131210800052::92+VALEO SYSTEMES THERMIQUES - RE++9, RUE DU COLONEL
CHARBONNEAUX+REIMS CEDEX++51057+FR'
LIN+1++8654459:BP::92'
RFF+ON:5500003044'
QTY+:1946:KGM'
DTM+145:20070109000000:204'
RFF+TN:2006101354'
CPS+1++1'
PAC+1+++A:EMB RE'
QTY+52:768:KGM'
PCI+17'
RFF+AAT:119377 M338712'
GIN+BX+119377 M338712'
PAC+1+++A:EMB RE'
QTY+52:1178:KGM'
PCI+17'
RFF+AAT:219667 M338711'
GIN+BX+219667 M338711'
LIN+2++8652502:BP::92'
RFF+ON:5500003631'
QTY+:3292:KGM'
DTM+145:20070109000000:204'
RFF+TN:2006101354'
CPS+2++1'
PAC+1+++A:EMB RE'
QTY+52:1620:KGM'
PCI+17'
RFF+AAT:119378 M338713'
GIN+BX+119378 M338713'
PAC+1+++A:EMB RE'
QTY+52:18:KGM'
PCI+17'
RFF+AAT:219663 M338715'
GIN+BX+219663 M338715'
PAC+1+++A:EMB RE'
QTY+52:1654:KGM'
PCI+17'

RFF+AAT:219669 M338714'
GIN+BX+219669 M338714'
LIN+3++8654459:BP::92'
RFF+ON:5500003044'
QTY+:1456:KGM'
DTM+145:20070109000000:204'
RFF+TN:2006101354'
CPS+3++1'
PAC+1+++A:EMB RE'
QTY+52:350:KGM'
PCI+17'
RFF+AAT:119379 M338716'
GIN+BX+119379 M338716'
PAC+1+++A:EMB RE'
QTY+52:1106:KGM'
PCI+17'
RFF+AAT:219663 M338717'
GIN+BX+219663 M338717'
UNT+62+1'
UNZ+1+164'